



# GMT MONTHLY MEMBERSHIP PROGRESS REPORT

Results as of: 5/31/2020

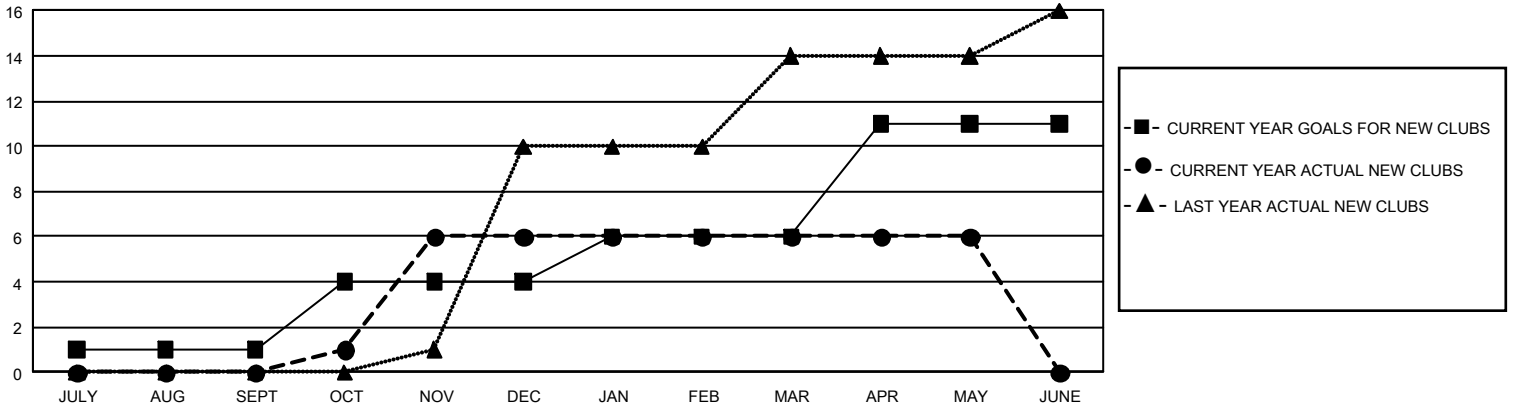
## GMT Constitutional Area 3, Group D

GMT: OPEN

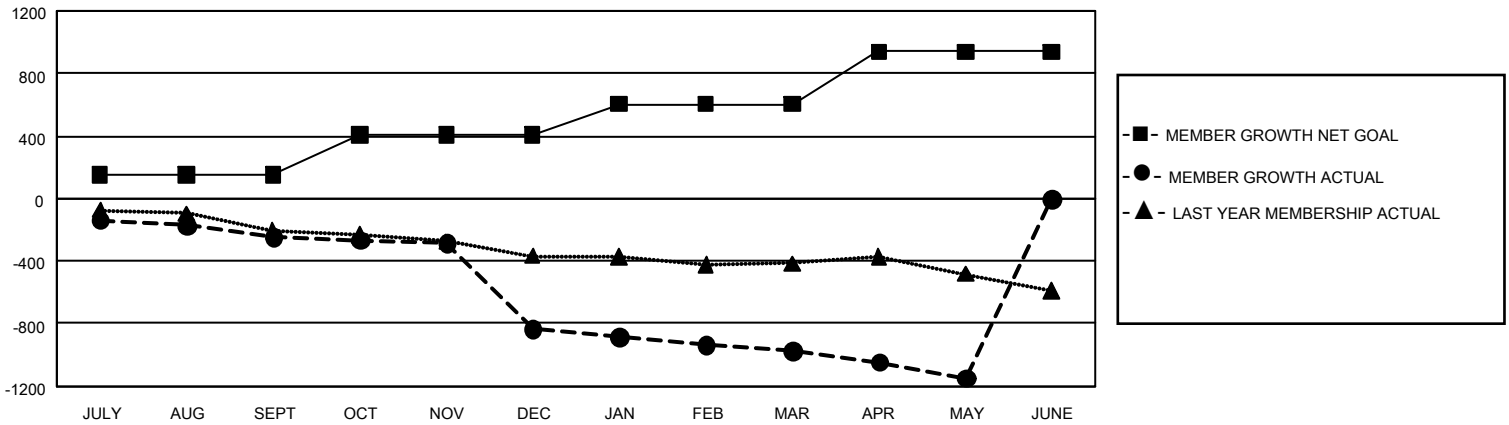
REPORT DOES NOT INCLUDE CLUBS IN UNDISTRICTED AREAS.

| Clubs                 |               |           |               | Members               |                        |                      |  |
|-----------------------|---------------|-----------|---------------|-----------------------|------------------------|----------------------|--|
| RESULTS FOR 2019-2020 |               |           |               | RESULTS FOR 2019-2020 |                        |                      |  |
| QUARTER               | NEW CLUB GOAL | NEW CLUBS | DROPPED CLUBS | QUARTER               | MEMBER GROWTH NET GOAL | MEMBER GROWTH ACTUAL | DROPPED MEMBERS ACTUAL (including transfers) |
| JULY/AUG/SEPT         | 3             | 0         | 4             | JULY/AUG/SEPT         | 456                    | 184                  | 403  |
| OCT/NOV/DEC           | 9             | 6         | 21            | OCT/NOV/DEC           | 759                    | 350                  | 911  |
| JAN/FEB/MAR           | 6             | 0         | 3             | JAN/FEB/MAR           | 594                    | 128                  | 261  |
| APR/MAY/JUNE          | 15            | 0         | 3             | APR/MAY/JUNE          | 1,008                  | 60                   | 229  |

**GOALS AND ACTUAL NEW CLUBS CUMULATIVE**



**GOALS AND ACTUAL MEMBERS CUMULATIVE**



|   |   |  |
|---|---|--|
| <b>DROPPED CLUBS: 31</b>  | 225 CLUBS OF 610 ADDED 1 OR MORE NEW MEMBERS              | <b><u>GENDER DISTRIBUTION</u></b><br>MALE            5,671 (53.85%)<br>FEMALE         4,861 (46.15%) |
| <b><u>DROPPED MEMBERS</u></b><br>DECEASED            138<br>CLUB CANCELLED      255<br>OTHER                 1,409<br><hr/> TOTAL                 1,802 | <a href="#">CLICK HERE FOR CUMULATIVE MEMBERSHIP DATA</a> | TOTAL FAMILY UNIT MEMBERS            3,599<br><br>FAMILY MEMBERS PAYING HALF DUES      1,910         |